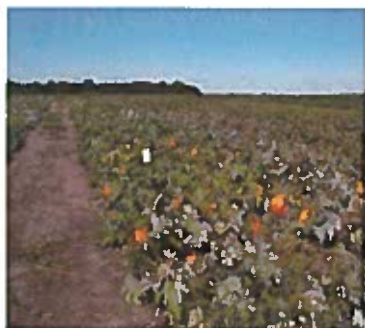


2015 PUMPKIN FIELD DAY



Thursday, August 20 • 6 – 8 P.M.

Western Agricultural Research Station
7721 S. Charleston Pike
South Charleston, OH 45368

Topics

- Current and Unregistered Fungicides for Powdery Mildew
- Aerial Imagery Used to Advance Early and Late Season Pest Management in Cucumbers and Pumpkins
- Downy Mildew Sentinel Trial
- Impact of Insecticides and Fungicides on Squash Bee and Honey Bee Populations
- Row Covers and Trap Crops

Speakers

- Sally Miller, Plant Pathology
- Reed Johnson, Entomology
- Jim Jasinski, OSU Extension
- Celeste Welty, Entomology

Please note, the speaker lineup is subject to change.

Registration

Please pre-register by sending an email to Jim Jasinski, jasinski.4@osu.edu, by August 13.

History

The Western Agricultural Research Station was established in 1958 on 428 acres north of South Charleston in Clark County. It houses one of the world's oldest no-till experimental plots, started by Ohio State scientists in the early 1960s. The renovated barns that used to house the Station were replaced with new facilities in 2008. Included are offices, a workshop, a conference room, and seed and machinery storage areas.

Directions

3.5 miles northwest of South Charleston on SR 41, Clark County, Ohio

For more Information

Jim Jasinski

937-484-1526

Jasinski.4@osu.edu

<http://www.oardc.osu.edu/branches/branchinfo.asp?id=9>



THE OHIO STATE UNIVERSITY

COLLEGE OF FOOD, AGRICULTURAL,
AND ENVIRONMENTAL SCIENCES

oardc.osu.edu | extension.osu.edu

CFAES provides research and related educational programs to clientele on a nondiscriminatory basis. For more information: go.osu.edu/cfaesdiversity